

## Howto: Retrieve your results

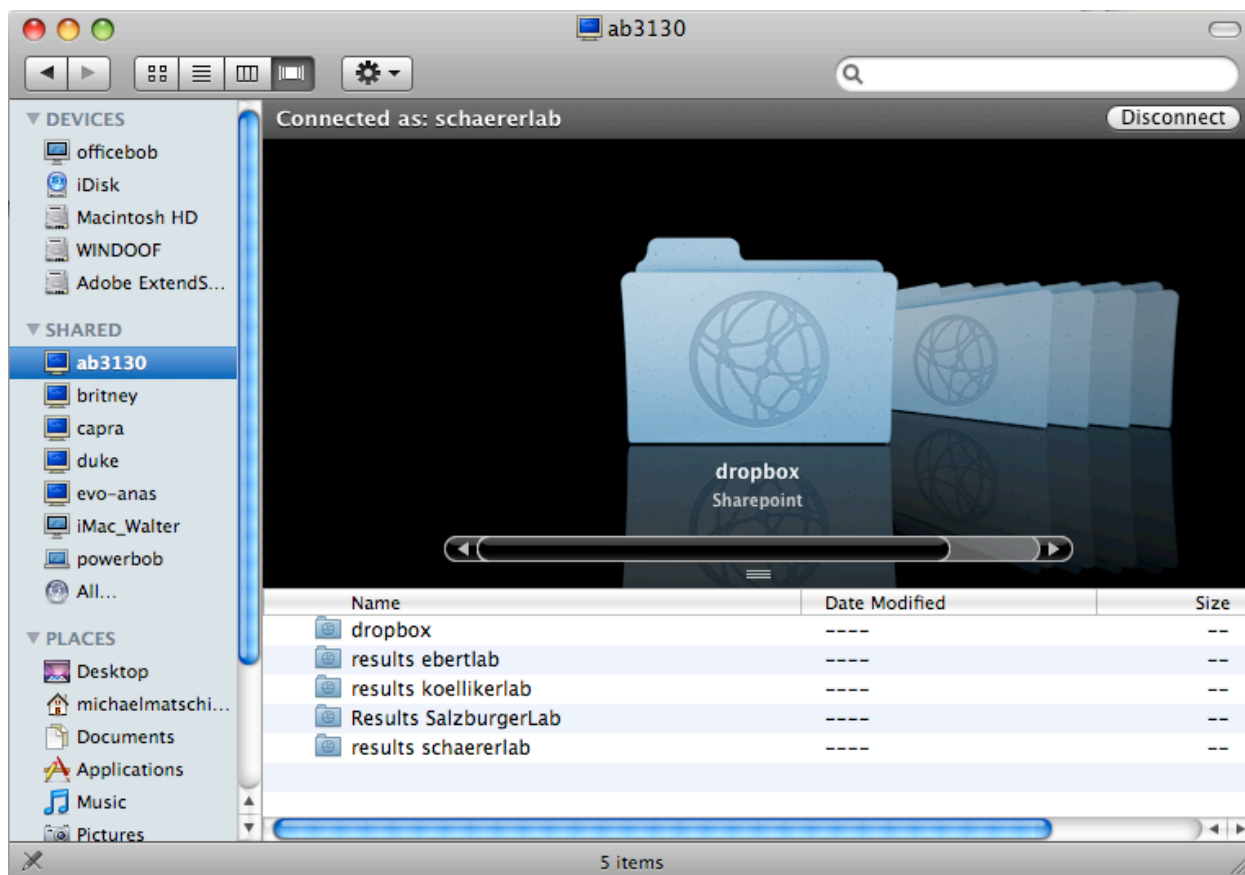
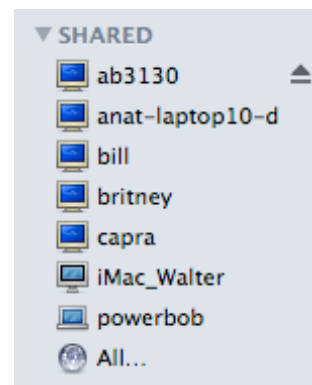
### 1. Mac Version (intern)

If you're on a Mac, please proceed the following:

Activate the Finder and connect to the computer ab3130 by clicking on its symbol in the category "Shared"

Alternatively, you can use Go > Connect to Server... from the Finder menu, then find ab3130 by clicking "Browse".

Click "Connect As..." to log on to ab3130 using the username schaeerlab, ebertylab, koellikerlab or salzburgerlab and the password that has been given to you. If you do not yet have a password, please contact somebody from the Salzburger group. You should see something similar to the following picture:

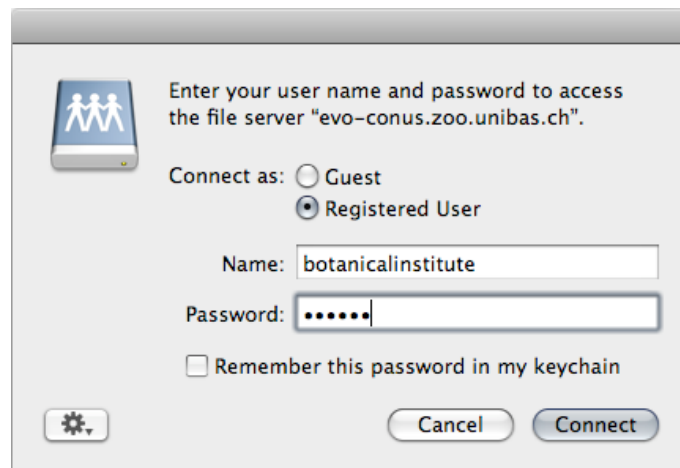


You have access to the folder called dropbox and one of the results folders, depending on your group. Open the corresponding results folder. Your data is named according to the plate name you've chosen.

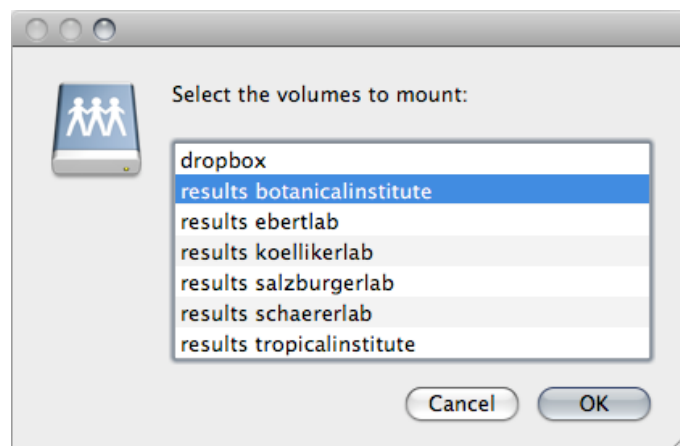
## 2. Mac Version (extern)

If you're on a Mac, but from outside the institute (e.g. botanical institute, tropical institute...) please proceed the following:

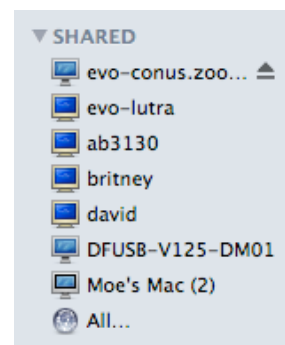
Use Go > Connect to Server... from the Finder menu. Type `smb://evo-conus.zoo.unibas.ch/`. Enter your username (botanicalinstitute, tropicalinstitute) and your password.



Choose your home folder. Except for the dropbox, this is the only folder to which you have access.



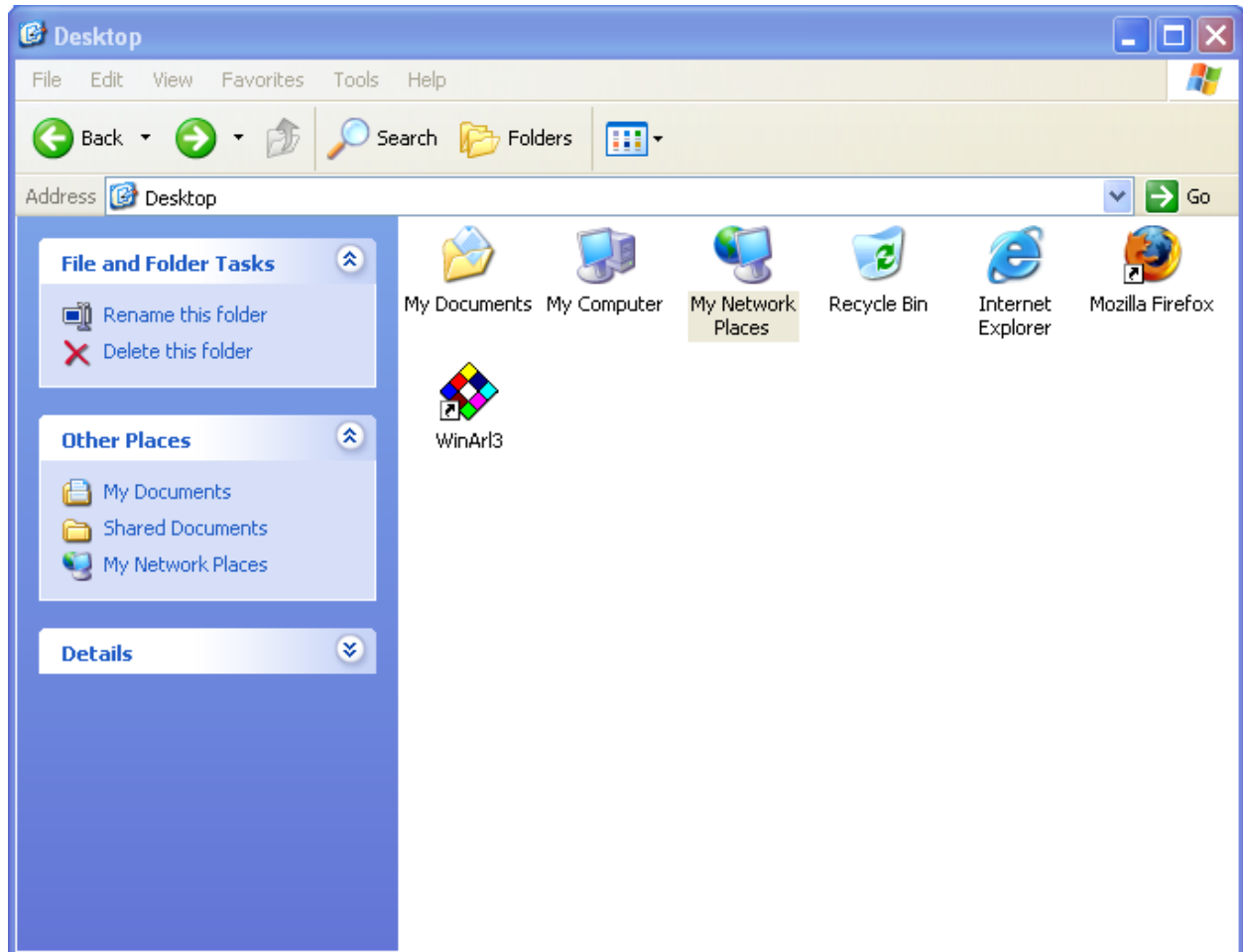
Server evo-conus (which is ab3130) is now mounted, as you can tell from the eject symbol next to the computer in the category "Shared" of any open Finder window. You can now browse your results folder. Just drag'n' drop your result files to your hard drive.



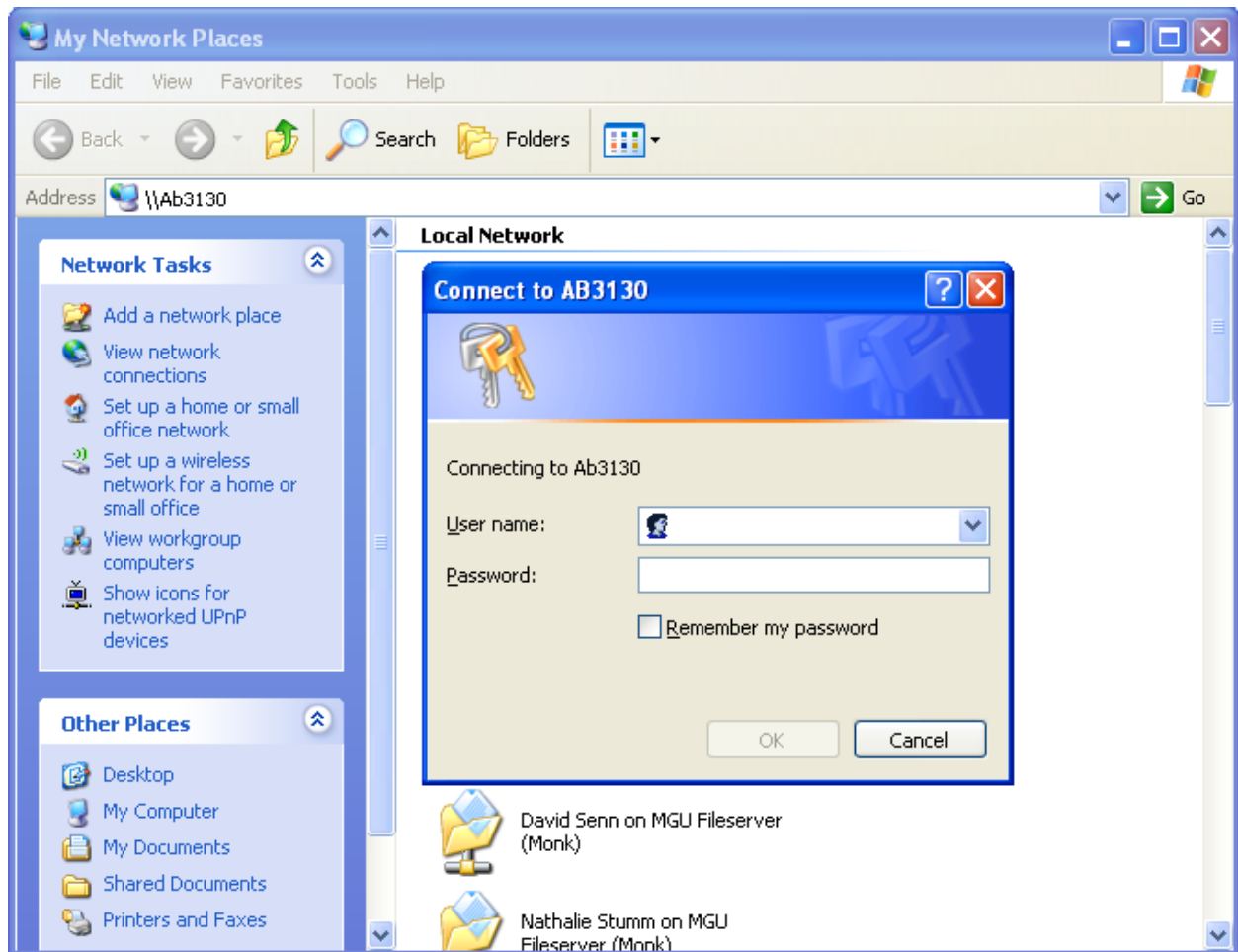
### 3. Windows Version (intern)

If you're on Windows, you can retrieve your results the following:

On the desktop, click on My Network Places.

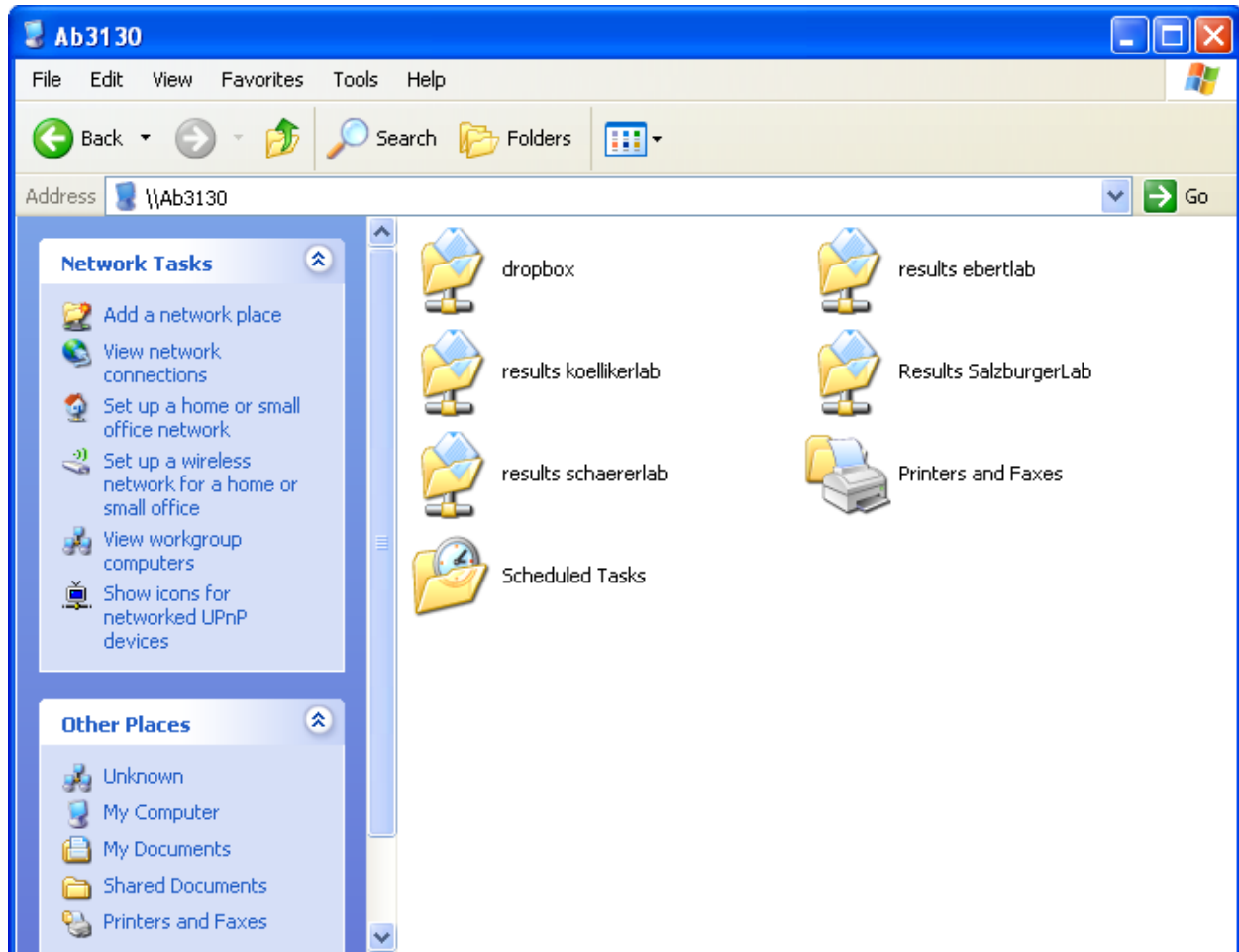


In the Network Places folder, type “\\Ab3130” in the address bar, and you’ll receive an authentication prompt:



Connect to ab3130 using one of the user names schaeererlab, ebertlab, koellikerlab and type in your password.

Once you're connected, you'll see the following folder (minus the Printers and Faxes and the Scheduled Tasks):



Open the corresponding results folder. Your data is named according to the plate name you've chosen.

#### ***4. Windows version (extern)***

For sure there's a way to connect to ab3130 under windows from extern, but I haven't yet figure out how to do this. If you find out about it, let me know!